

Medium Bi-Pin Lampholders

Designed for U-Bend Lamps



1615 Series Low Profile, Straight Insertion

Specifications

Rating: 660 Watts, 600 V

Listing: UL File No. E-13408;
CSA File No. LR95423

Mounting: Slide-on for 18 or 20 gauge panels
(top slot 20 gauge, bottom slot 18 gauge), or screw mount

Materials:

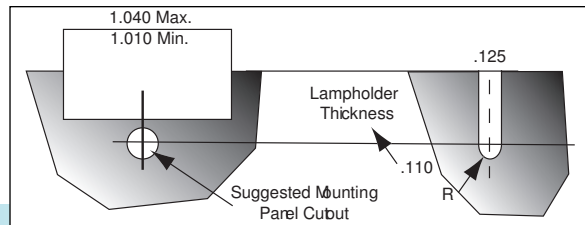
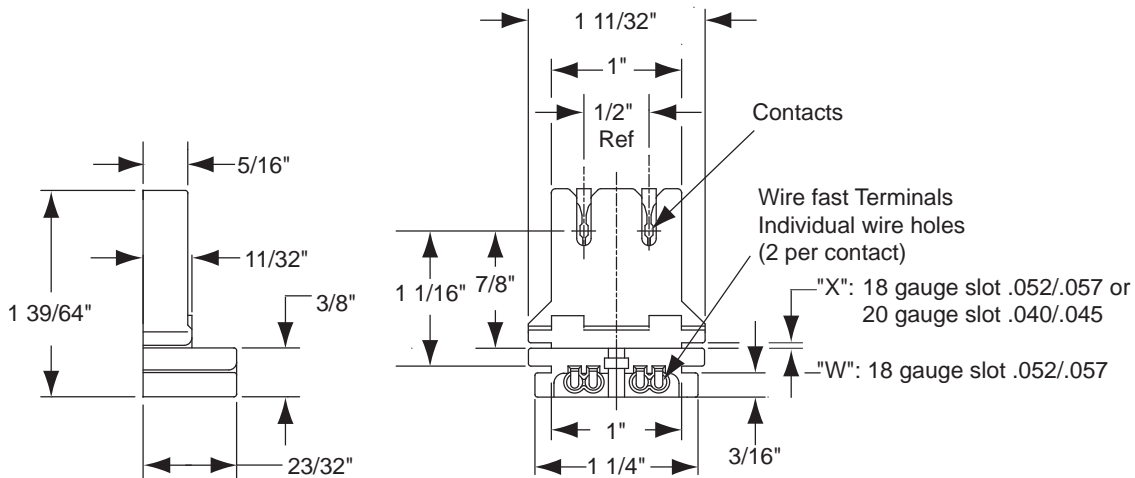
Housing: White urea

Contacts: Copper alloy, surface wipe configuration

Termination: "Wire fast" terminals for No. 18 AWG stranded
(twisted, tinned and solder dipped or fused) or No. 18 AWG solid
copper wire with 3/8" strip length.

Special: Item can be factory wired per customer specifications for length,
strip and wire material.

1615.20



Kulka® 1615 Series

18 gauge Panel Part No.	20 gauge Panel Part No.
----------------------------	----------------------------

1615.18	1615.20	Slide-on or screw mount
1615.18P	1615.20P	Slide-on or screw mount with pre-assembled No. 4-36 palnut
1615.18PJ	1615.20PJ	Slide-on or screw mount with pre-assembled No. 4-36 palnut and externally shunted

Packed 1250/ box. No. 4/36 x 3/8" screws supplied in bulk (p/n: 8043.612.002)