

DA10 Do-All Light Box

You have just become the owner of the most versatile, all-purpose photographic light source ever devised.

As you work with it, the Aristo DA10 will become an indispensable light tool to you in the many illumination jobs it is capable of performing. With a little experimenting and a little imagination, we are certain you will find still more, and possibly better, methods of using this unusual "Do-All" light source in your operation, than are listed here.

Before making any exposures, allow unit to burn for a few minutes in order to redistribute the mercury vapor inside the lamp. This should be done whenever the DA10 remains idle for several days or weeks, as on a dealer's shelf.



Basic Functions

I. Opaque copy photography:

For Copying, Microfilming, Slide making, etc. will handle originals up to 8 1/2 x 11 inches.

1. Place unit on a clean matte white background.
2. Insert copy, centering it within the unit so that complete uniformity of light is assured. Do not use high gloss materials larger than 5 x 7 so that specular reflections into the lens are avoided. Semi-matte and matte copies such as portrait photos, letters, documents, drawings, etc., are ideal.

II. Transparencies, Color or Black & White, up to 8" x 10 "

For color duping, slide making, microfilming, etc.

1. Insert a clean matte white background beneath DA10. A white photo mount board will do very well.
2. Slide the diffusion tray into the top tracks of the unit.
3. Place the transparency on the diffusion, emulsion side up.
4. Transparency may be held flat with a piece of glass if necessary.



DA10 Do-All Light Box con't

III. Small Parts Photography:

1. Set up same as for opaque copy. Here, different colored backgrounds, which may enhance the objects being photographed, could be used. A package of assorted colored construction paper will serve nicely.
2. For shadow-free illumination, on objects with cavities or recesses, use DA10 without masking.
If shadows are desired to emphasize depth, texture, or dimension of the object, opaque or translucent masks maybe introduced between the light source and the object on one or more sides of the unit.

Masks may easily be made of copy board. To provide still greater latitude in shadow modeling or composition, these may be made black on one side to absorb light and white on the other to reflect light. Thus, it is possible to achieve an almost infinite variety of shadow modeling effects.



IV. The photography of Jewelry and Silverware:

1. Set up as for opaque copy.
2. Introduce the desired background for the contrast wanted.
3. To subdue strong specular highlights, for a more pleasing visual effect, introduce translucent masks on all four sides. This is called "tenting," normally employed in photographing highly specular objects. "Tenting" may be done by using white bond or typewriter paper, or better still, masks may be made of white translucent plastic.
4. Specimens of tissue, organs, fruit, flowers, small animals, insects, etc., are beautifully photographed with the DA10.

Any one or combination of the foregoing masking techniques may be used in this type of photography to enhance texture of the specimen being photographed. One of the important advantages in using the DA10 is that the heat rise on the specimen is negligible even on prolonged exposure, thereby preserving its integrity for longer than is possible with any other source.



V. Biological Photography:

1. Specimens of tissue, organs, fruit, flowers, small animals, insects, etc., are beautifully photographed with the DA10. Any one or combination of the foregoing masking techniques may be used in this type of photography to enhance texture of the specimen being photographed. One of the important advantages in using the DA10 is that the heat rise on the specimen is negligible even on prolonged exposure, thereby preserving its integrity for longer than is possible with any other source.
2. The special rectangular lamp with which the DA10 is equipped emits light at approximately 5800 K and provides very acceptable results on any of the color daylight films available without additional filtering. However, if work is exceptionally critical, additional filtering may be employed where necessary.
3. The lamp is rated for approximately 5000 burning hours. Frequent on-off operation will reduce this life to some extent. It is preferred that you leave the lamp on between exposures.

Care of Diffusion Tray

1. Wipe occasionally with soft cloth and antistatic liquid, such as No Stat. Do not wipe with dry cloth as fine scratches may result.
2. Replacement lamps may be purchased from your local dealer. Installation is very simple and takes about ten minutes.
3. With a normal amount of care, the DA10 will provide years of useful and trouble-free service.

Caution: *Instructions are for guidance only.*

Aristo/Voltarc will not be responsible for any damage to lamp or lamp housing for items improperly installed.



DA10 Lamp Installation

1. Unplug unit.
2. Remove Cover (6 screws)



*DA10 Lamp
as recieved from factory*

3. If you have nylon safelite connectors simply cut off



If you have wire nuts simply unntwist.



5. Inside box, unscrew 3 clips and remove, carefully cut silicone around the lamps

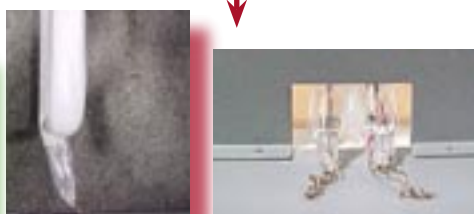


6. Place lamp in as shown:

Right Way



Wrong Way



7. Put new lamp in box, tighten the three clips
8. With the enclosed wirenuts, twist the lamp wire to the red and blue wires. make sure wires are not touching case
9. Replace of the cover 6 screws.

Caution: *Instructions are for guidance only.*

Aristo/Voltarc will not be responsible for any damage to lamp or lamp housing for items improperly installed.

