

### DA17 Do-All Light Box

You have just become the owner of the most versatile, all-purpose photographic light source ever devised.

The Aristo DA17, being larger than its well know smaller version, the DA10, is a "Do-All" light source whose versatility exceeds even that of its smaller brother. While the DA17 will perform all the suggested illumination jobs outlined below; in the final analysis, it's varied uses are limited only by your imagination.

Before making any exposures, allow the DA17 to warm up for a few minutes in order to redistribute/activate the mercury vapor inside the lamp. This "pre-warming" should be done whenever the DA17 remains idle for several days or weeks.



### Basic Functions

#### I. Opaque copy photography:

For Copying, Microfilming, Slide making, etc. Will handle originals up to 15 1/2 x 18 1/2 inches.

1. Remove diffusion tray.
2. Place unit on a clean matte white background.
3. Insert copy, centering it within the unit so that complete uniformity of light is assured.

Do not use high gloss materials larger than 10 x 12 so that specular reflections into the lens are avoided. Matt or Semi-matte copy such as portrait photos, letters, documents, drawings, etc., are ideal.

#### II. Parts and Component Photography:

For color duping, slide making, microfilming, etc.

1. Set-up as for opaque copy. Here, backgrounds of different colors may be used where they enhance the object being photographed. In using background other than white or black, it may become necessary to employ a corrective filter to color enhance the light reflected from such colored backgrounds onto the object.
2. For shadow free illumination, on objects with cavities or recesses, use the DA17 without masking.
3. If shadows are desired to emphasize depth, texture, or dimension of the object, opaque or translucent masks maybe introduced between the light source and the object on one or more sides of the DA17 unit. Masks may easily be made of black and white Oak tag. Cut pieces of each and cement together. Use the white side to reflect light and the black to absorb. Thus, it is possible to achieve an almost infinite variety of shadow modeling effects.



DA17 Do-All Light Box con't

### III. Small Parts Photography:

1. Set up same as for opaque copy. Here, different colored backgrounds, which may enhance the objects being photographed, could be used. A package of assorted colored construction paper will serve nicely.
2. For shadow-free illumination, on objects with cavities or recesses, use DA17 without masking

*If shadows are desired to emphasize depth, texture, or dimension of the object, opaque or translucent masks maybe introduced between the light source and the object on one or more sides of the unit.*

Masks may easily be made of copy board. To provide still greater latitude in shadow modeling or composition, these may be made black on one side to absorb light and white on the other to reflect light.

Thus, it is possible to achieve an almost infinite variety of shadow modeling effects.

### IV. The photography of jewelry, silverware, glassware, etc.:

1. Set up as for opaque copy.
2. Introduce the desired background for the contrast you wish to achieve.
3. To subdue strong specular highlights, for a more pleasing visual effect, introduce translucent masks on all four sides of the DA17. This is called "tenting," normally employed in photographing highly specular objects. "Tenting" may be done by using white bond or typewriter paper, or better still, masks may be made of white translucent plastic. These come in a variety of densities which could provide the photographer an almost limitless choice of illumination effects.



### V. Photography of Biological, Pathological and Medical Specimens:

1. Specimens larger than those that could be accommodated in the small DA10 can now be beautifully photographed with the DA17. Any one or any combination of the above masking techniques may be employed to produce the desired effects in the specimen being photographed.
2. In the case of wet specimens, a white non-glossy rubber sheeting can serve adequately as a background.
3. One of the important advantages of the DA17 is that the heat rise on the specimen is negligible even on prolonged exposure, thereby preserving its integrity for longer than is possible with any other source.



DA17 Do-All Light Box con't

### VI. Duplicating and Microfilming Transparencies 35 mm to 14 x 17 X-Rays:

1. Turn the DA17 upside down, so that the rectangular lamp is at the bottom. Now slide the diffusion tray into the tracks as far as it can go.
2. Insert a clean matt white background beneath the inverted DA17.
3. Place the transparency or X-Ray on the diffuser tray, which if necessary, can be held flat with a piece of glass.

### VII. Other Applications:

While foregoing methods of employing the DA17 are the most obvious, they are by no means the only methods to use this unit. For example, the DA17 may be stood on its side or on its end in an upright position for table top photography. Or try "mug" shots with the subject approximately 18 inches in front of the light. Or for shadow free illumination of hardware or equipment larger than will fit into the unit itself, etc., etc.

These standard W55 rectangular lamp (other lamp colors are available) in which the DA17 is equipped, emits light at approximately 5800 K and provides very acceptable results on the daylight films available. On others, a white background may turn out with a magenta or bluish cast. In such case, where results are critical, corrective filtering should be employed to bring the lights into balance for the film being used. Also, in spite of rigid controls, a slight shift in the color balance of the lamp may occur from one batch to another requiring corrective filtering on critical work. The use of the FLD plus 10 or 20 magenta filters usually corrects for daylight film or the use of 30 M alone.

The lamp is rated for approximately 7500 burning hours. Frequent on-off operation will reduce this life to some extent. It is recommended that the lamp be left on between exposures, unless exposures are made infrequently.

### Care of Diffusion Tray

Wipe occasionally with soft cloth and antistatic liquid, such as No Stat. Do not wipe with dry cloth as fine scratches may result. Replacement lamps may be purchased from your local dealer. Installation is very simple and takes about ten minutes. With a normal amount of care, the DA17 will provide years of useful and trouble-free service.

**Caution:** Instructions are for guidance only.

*Aristo/Voltarc will not be responsible for any damage to lamp or lamp housing for items improperly installed.*



## DA17 Lamp Installation

1. Unplug unit.
2. Remove Cover (6 screws)



DA17 Lamp  
as recieved from factory

3. If you have nylon safelite connectors simply cut off



If you have wire nuts  
simply unntwist.



5. Inside box, unscrew 3 clips and remove, carefully cut silicone around the lamps

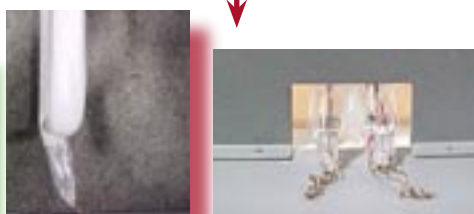


6. Place lamp in as shown:

Right Way



Wrong Way



7. Put new lamp in box, tighten the three clips
8. With the enclosed wirenuts, twist the lamp wire to the red and blue wires. make sure wires are not touching case
9. Replace of the cover 6 screws.

**Caution:** Instructions are for guidance only.

Aristo/Voltarc will not be responsible for any damage to lamp or lamp housing for items improperly installed.

